

# Riverbend Water Resources District



**SUMMER 2017**

# Who is Riverbend?

- ◆ Bowie County
- ◆ Cass County
- ◆ Red River County
- ◆ City of Annona
- ◆ City of Atlanta
- ◆ City of Avery
- ◆ City of De Kalb
- ◆ City of Hooks
- ◆ City of Leary
- ◆ City of Maud
- ◆ City of Nash
- ◆ City of New Boston
- ◆ City of Redwater
- ◆ City of Texarkana (Texas)
- ◆ City of Wake Village
- ◆ TexAmericas Center
- ◆ City of Red Lick
- ◆ Central Bowie County WSC

*The Riverbend Water Resources District is a conservation and reclamation district that provides water and waste water services to the Red River Army Depot and the TexAmericas Center industrial park with a 40,000 acre footprint. Riverbend formally represents through Interlocal Agreements the interests in water supply for the most northeast Texas region of the state, including 3 counties, 12 municipalities, and the largest industrial park footprint in Texas.*



# What is Riverbend's Mission

- ◆ Riverbend was created for the purpose of providing a regional governance structure for water resources in order to protect the ownership and distribution of the water resources of the region and take leadership of the regional water infrastructure issues facing the region.
- ◆ Two primary functions:
  - Operations
  - Planning



# Operations

- ◆ **Wholesale Water Provider**
- ◆ **Water User Group – Region D**
- ◆ **Wet Utilities for U.S. Army Installation (Red River Army Depot)**
  - Provide water services, including maintenance and storage
  - Domestic Wastewater Plant
  - Industrial Wastewater Plant
  - Multiple Capital Improvement Projects (i.e., Ground Water Storage Tanks)



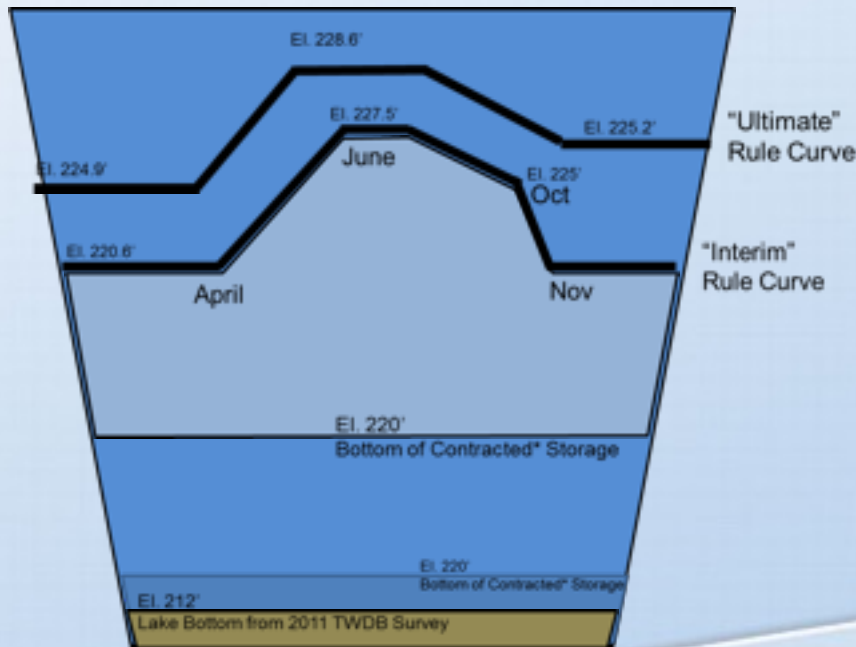
# Planning

- ◆ Implementation of the Ultimate Rule Curve
- ◆ Regional Water Master Plan
  - Analysis of existing water and wastewater infrastructure;
  - Update of current population and growth projections;
  - Calculation of monthly, average and max day water demand data; and
  - Identification of needed infrastructure and projected schedule of future developments.
- ◆ State Water Plan and Region D Planning
- ◆ State and Federal Engagement



# Implementation of Ultimate Rule Curve

- ◆ Implementation of the Ultimate Rule Curve
- ◆ Contracts w/ US Army Corps of Engineers
  - 1953 – Original storage contact (18mgd ~ 40 ac ft per yr)
  - 1968 – Interim Curve ~ 4 months operation 225-227.5 (180,000 ac ft per yr)
  - 1968 – Permanent Curve ~ 8 months operation 225-228.64 (2020 project available 294,000 ac ft per yr = possibly 114,00 ac ft more available)



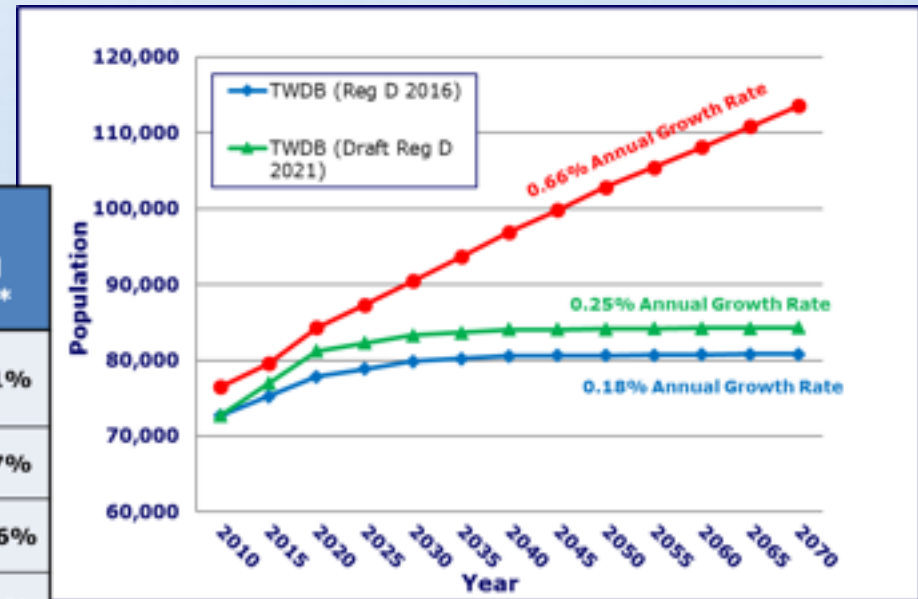
\*Withdrawals allowed during dry periods with USACE permission.



# Planning

- ◆ Regional Water Master Plan (3 Town Halls To-Date)
  - High on Stakeholder Engagement
  - Focus on “Boots-On-The-Ground”
  - Generation of Accurate Population Projections

Name of Entity	Entity Data (Pop. & %Annual Growth)		2016 TWDB (Pop. & %Annual Growth)*		TSDC Pop. & %Annual Growth)**	
	Pop.	%Annual Growth	Pop.	%Annual Growth	Pop.	%Annual Growth
Central Bowie Co. WSC (Bowie Co.)	13,242	0.91%	7,937	0.64%	6,153	0.21%
City of Atlanta (Cass Co.)	9,709	0.90%	5,818	0.04%	5,918	0.07%
City of Clarksville (Red River Co.)	3,077	-0.10%	3,016	0.02%	2,984	-0.16%
City of Redwater (Bowie Co.)	6,457	3.06%	1,134	0.12%	1,199	0.21%
City of Texarkana (TX) (Bowie Co.)	47,102	0.43%	39,046	0.12%	41,295	0.21%



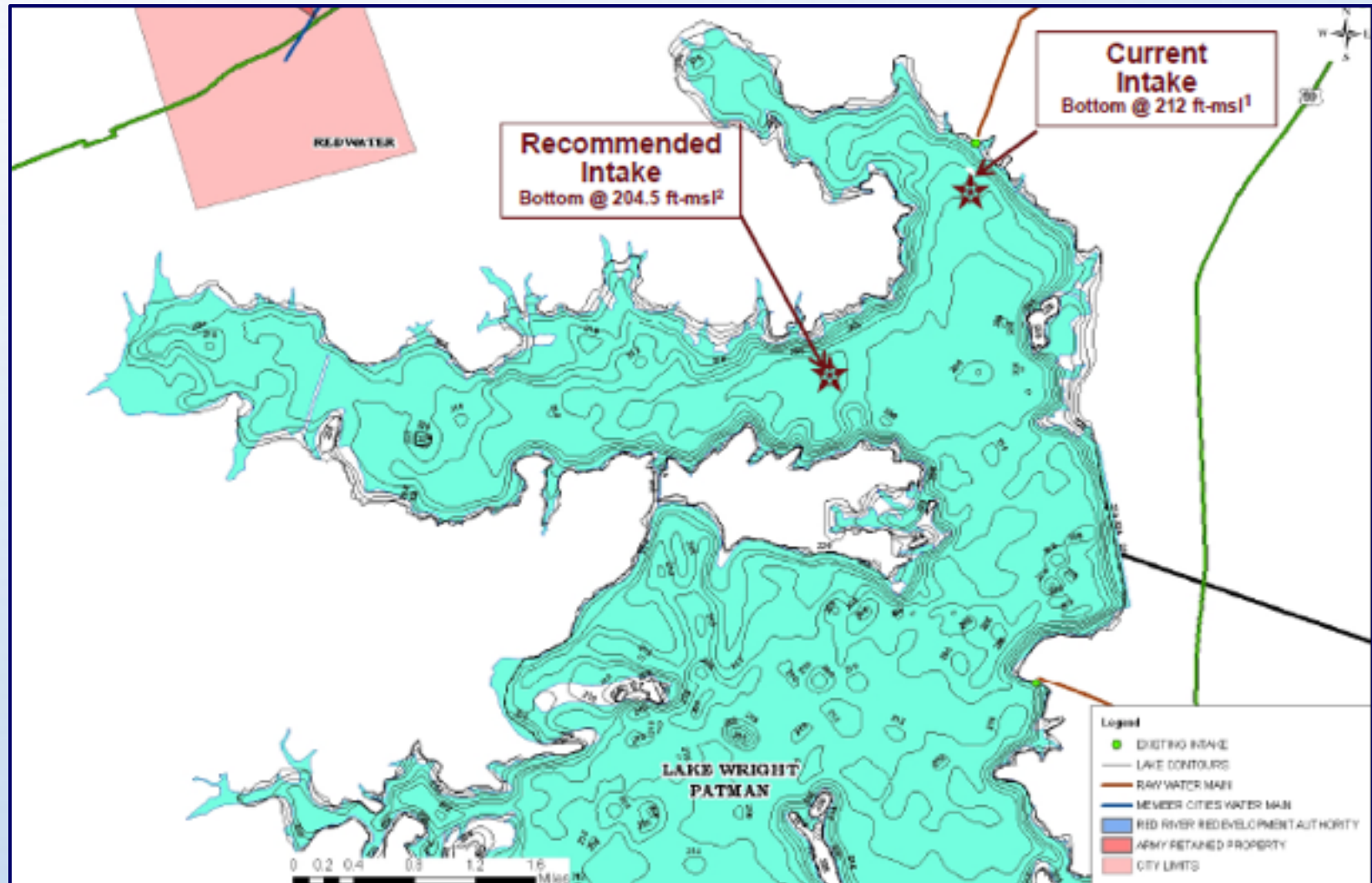
# Planning

- ◆ Regional Water Master Plan
  - Identification of Infrastructure Improvements (Short “Priority” List) for Further Cost Analysis:
    - Creation of New Intake and Raw Water Line to Riverbend Footprint @ TAC
    - Improvements to New Boston Rd Intake System and Pipeline;
    - Expansion or development of future water treatment in Cass County;
    - Development of new water treatment in Bowie County on or near Riverbend footprint @ TAC. Calculation of monthly, average and max day water demand data; and
    - Implementation of Ultimate Rule Curve
- ◆ Water Rates Study
  - Creation of an Affordable Roadmap for our region to pursue. Key word here is “affordability.”



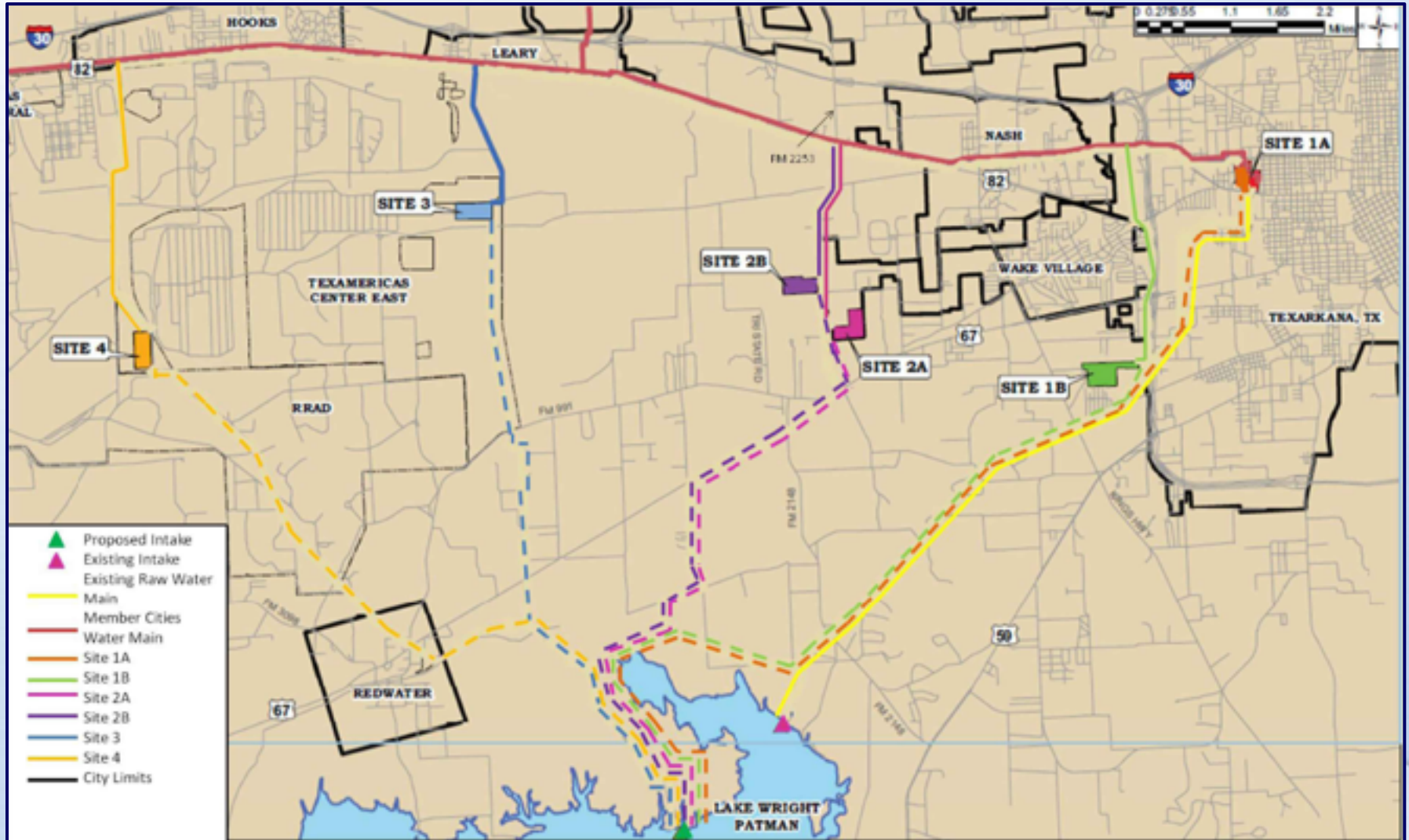


# Raw Water Intakes



\*Source: RWRD Phase 3 Report on Water Treatment Plant and Raw Water Intake Site Selection; CH2M HILL (August 29, 2012)

# New Water Treatment Plant

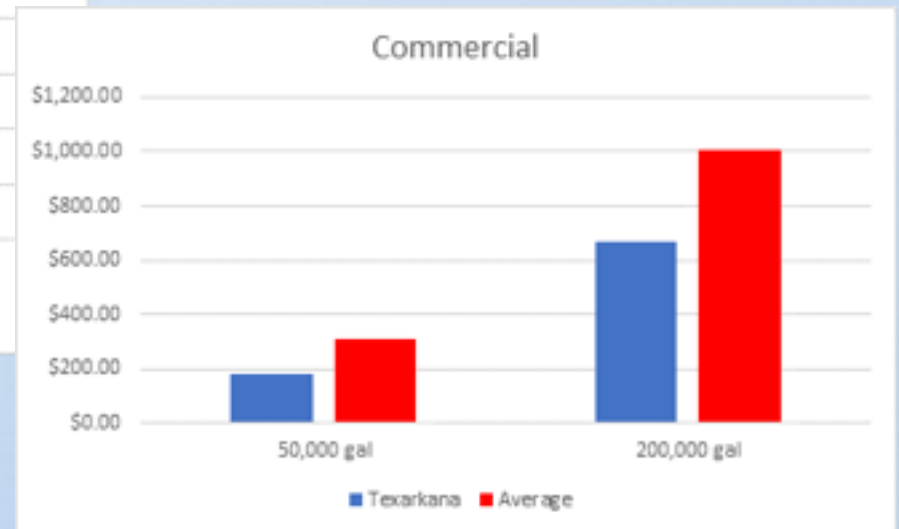
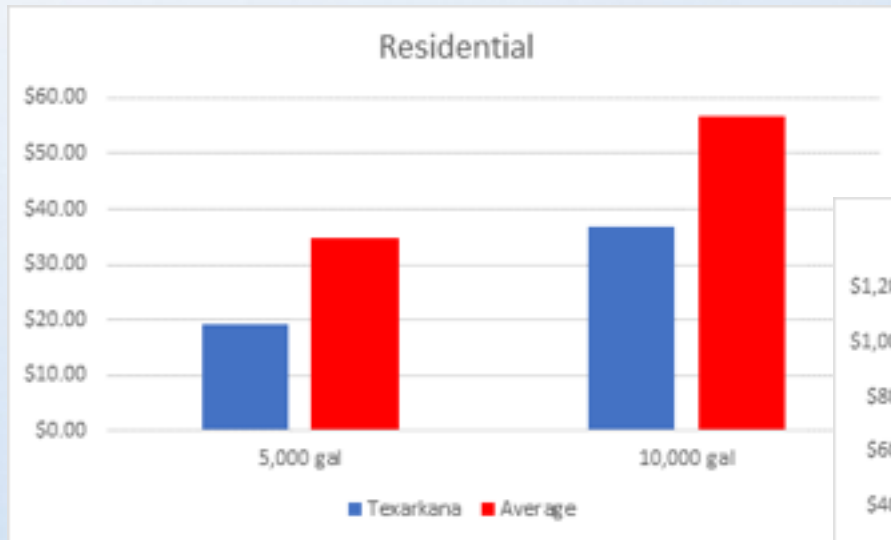


\*Source: RWRD Phase 3 Report on Water Treatment Plant and Raw Water Intake Site Selection; CH2M HILL (August 29, 2012)

# Water Rates

- ◆ Water Rates Study

- Creation of an affordable roadmap for our region to pursue. Key word here is "affordability."



More information <https://www.tml.org/surveys#water>



# Q&A Discussion



# **For More Information**

## **Riverbend Water Resources District**

### **Board of Directors**

**Jim Green, President**

**Marshall Wood, Vice President**

**Fred Milton, Treasurer**

**Kelly Mitchell, Secretary**

**Sean Rommel, Past President**

### **Executive Director/CEO**

**Elizabeth Fazio Hale**

**(903) 831-0091**

**[lizfazio@rwr.org](mailto:lizfazio@rwr.org)**

